

PART OF N.E. 1/4 OF SECTION 22, T.6N, R.1W, S.L.B. & M.
ROLLING HILLS ADDITION NO. 2

TAXING UNIT : 25

IN OGDEN CITY

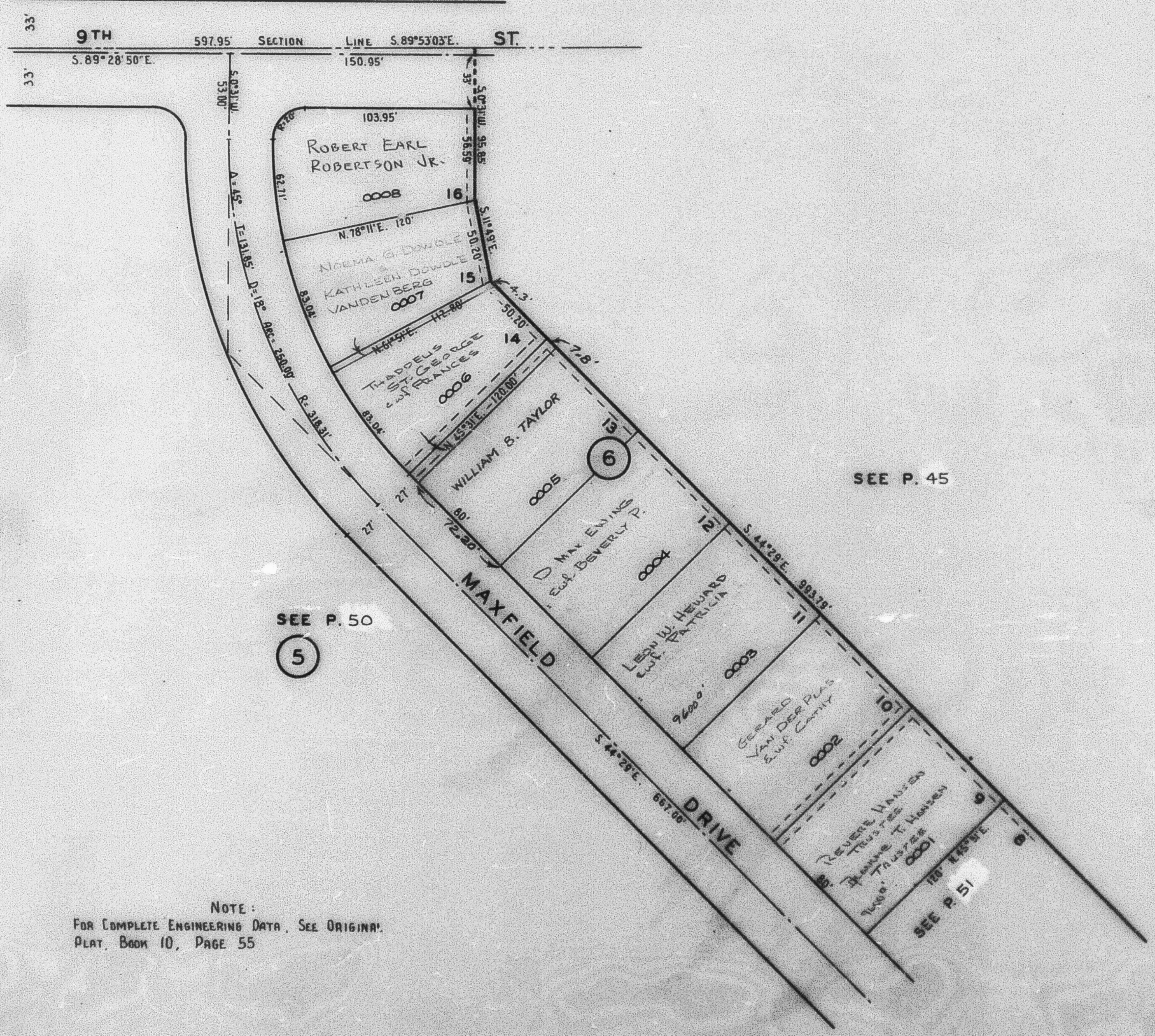
PREFIX : 13-052

SCALE: 1" = 50'

CENTRAL WEBER SEWER IMPROVEMENT DISTRICT

PT. BLK. 6

SEE BOOK II, PAGE 105



SEE P. 45

SEE P. 50

5

SEE P. 51

NOTE:
FOR COMPLETE ENGINEERING DATA, SEE ORIGINAL
PLAT, BOOK 10, PAGE 55